



10 Beechwood Road, Dronfield, S18 1PW

Saxton Mee



# 10 Beechwood Road

## £339,500

Being very well placed for local amenities within relatively flat walking distance is this three bedroomed detached bungalow with superb conservatory and generous garden.

Being a few hundred yards from the Civic Centre, Sainsburys , local parks, doctors surgery and pharmacist, the bungalow benefits from having an excellent conservatory overlooking the private garden to the rear , UPVC double glazing, gas central heating, and briefly comprises: good size entrance porch, lounge/dining room, breakfast kitchen, excellent conservatory, master bedroom with en-suite shower room, double bedroom two and single bedroom three all having built in wardrobes. There is also a bathroom.

Outside sees a low maintenance front garden with driveway and car port, good size rear garden which is mainly lawned and has a timber garden shed and greenhouse.

- Excellent three bedroomed detached bungalow
- Master bedroom with en-suite shower room and built in wardrobes
- Two further bedrooms with built in wardrobes
- Generous rear garden with shed and greenhouse
- Front porch and car port
- Within level walking distance of the Civic Centre
- Local amenities close by
- Superb conservatory
- Gas central heating and double glazing
- EPC: D Council Tax Band: Tenure:



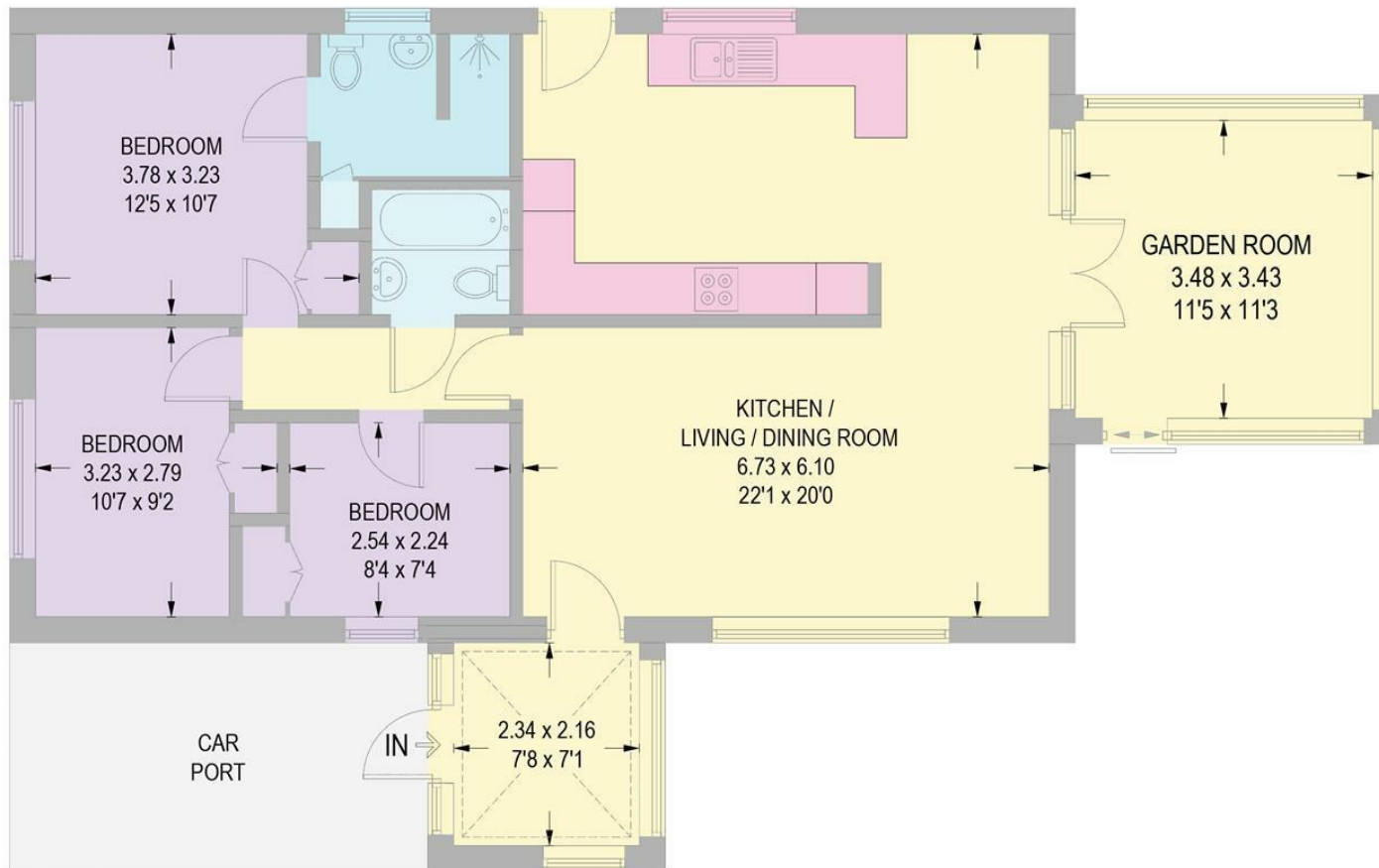






# 10 BEECHWOOD ROAD

APPROXIMATE GROSS INTERNAL AREA = 98.3 SQ M / 1058 SQ FT



## GROUND FLOOR

Illustration for identification purposes only,  
measurements are approximate, not to scale.

While we endeavour to make our sales particulars fair, accurate and reliable, they are only a general guide to the property and, accordingly, if there is any point, which is of particular importance to you, please contact the relevant office. The Agents have not tested any apparatus, equipment, fittings or services and so cannot verify they are in working order. The buyer is advised to obtain verification. Please note all the measurement details are approximate and should not be relied upon as exact. All plans, floor plans and maps are for guidance purposes only and are not to scale. Under no circumstances should they be relied upon as exact or for use in planning carpets and other such fixtures, fittings or furnishings. YOUR HOME IS AT RISK IF YOU DO NOT KEEP UP REPAYMENTS ON A MORTGAGE OR OTHER LOAN SECURED ON IT. 'A Life Assurance policy may be requested.' 'Written Quotations of credit terms available on request.'

Banner Cross  
T: 0114 268 3241  
E: [bannercross@saxtonmee.co.uk](mailto:bannercross@saxtonmee.co.uk)  
[www.saxtonmee.co.uk](http://www.saxtonmee.co.uk)

Dronfield  
T: 01246 290992  
E: [dronfield@saxtonmee.co.uk](mailto:dronfield@saxtonmee.co.uk)

Hathersage  
T: 01433 650009  
E: [hathersage@saxtonmee.co.uk](mailto:hathersage@saxtonmee.co.uk)

Bakewell  
T: 01629 815307  
E: [bakewell@saxtonmee.co.uk](mailto:bakewell@saxtonmee.co.uk)

Matlock  
T: 01629 828250  
E: [matlock@saxtonmee.co.uk](mailto:matlock@saxtonmee.co.uk)

